

T-LAB  
PROFESSIONAL



PREMIER

COLOUR  
COLLECTION

UNIQUE NATURAL COMPLEX



## PREMIER NOIR

Premier Noir – is innovative PPD-free permanent colouring cream based on Unique Natural Complex (UNC) that consists of French Rose Extract, Cashmere Proteins and Keratin.

Premier Noir – gently takes care of the hair and enriches it with strength during colouring by ensuring restoration and nourishment at three levels: skin, cortex and cuticle.

Premier Noir – is intensive long-lasting shades, magnificent, glossy hair, perfect gray coverage, a wide palette of colours, easy and convenient application.

Premier Noir – hair colourant has pleasant creamy texture and delicate aroma of a French Rose.

It goes on gently and evenly.



## PREMIER BLANC

Premier Blanc – is innovative ammonia-free and PPD-free oxidation colouring cream formulated with Unique Natural Complex (UNC), which consists of French Rose Extract, Silk Proteins and Keratin.

Premier Blanc – gently takes care of the hair and enriches it with strength during colouring by ensuring restoration and nourishment at three levels: skin, cortex and cuticle.

Premier Blanc – has a wide range of applications, including permanent colouring, semi-permanent colouring and pastel toning.

Premier Blanc – hair colourant has the pleasant creamy texture and delicate aroma of a French Rose.

It goes on gently and evenly.



# NATURAL

PREMIER NOIR  
PREMIER BLANC



# EXTRA NATURAL

PREMIER NOIR  
PREMIER BLANC

10.0 **AF**  
NATURAL  
LIGHTEST BLONDE



9.0 **AF**  
NATURAL  
VERY LIGHT BLONDE



8.0  
NATURAL  
LIGHT BLONDE



7.0 **AF**  
NATURAL  
BLONDE



9.00  
DEEP NATURAL  
VERY LIGHT BLONDE



7.00  
DEEP  
NATURAL BLONDE



6.0  
NATURAL  
DARK BLONDE



5.0 **AF**  
NATURAL  
LIGHT BROWN



4.0 **AF**  
NATURAL  
BROWN



3.0  
NATURAL  
DARK BROWN



1.0 **AF**  
NATURAL  
BLACK



5.00  
DEEP  
NATURAL LIGHT BROWN



**AF** AMMONIA FREE OPTION AVAILABLE

ONLY  
**AF** AMMONIA FREE ONLY

# GOLDEN

PREMIER NOIR  
PREMIER BLANC

# BEIGE

PREMIER NOIR  
PREMIER BLANC

9.3 <sup>AF</sup>  
VERY LIGHT  
GOLDEN BLONDE



8.30  
INTENSE LIGHT  
GOLDEN BLONDE



8.34 <sup>AF</sup>  
LIGHT GOLDEN  
COPPER BLONDE



7.3  
GOLDEN  
BLONDE



10.13  
LIGHTEST  
BEIGE BLONDE



9.13 <sup>ONLY  
AF</sup>  
VERY LIGHT  
BEIGE BLONDE



6.3  
DARK  
GOLDEN BLONDE



6.34  
DARK GOLDEN  
COPPER BLONDE



4.3  
GOLDEN  
BROWN



7.13  
BEIGE  
BLONDE



<sup>AF</sup> AMMONIA FREE OPTION AVAILABLE

<sup>ONLY  
AF</sup> AMMONIA FREE ONLY



# PEARLY

PREMIER NOIR  
PREMIER BLANC



# ASHY

PREMIER NOIR  
PREMIER BLANC

10.2 ONLY AF  
LIGHTEST IRIDESCENT BLONDE



10.21  
LIGHTEST IRIDESCENT ASH BLONDE



9.22  
INTENSE VERY LIGHT IRIDESCENT BLONDE



9.25  
VERY LIGHT IRIDESCENT MAHOGANY BLONDE



8.02  
LIGHT NATURAL IRIDESCENT BLONDE



5.26  
LIGHT EXTRA IRIDESCENT RED BROWN



3.22  
DEEP PURPLE DARK BROWN



10.1  
LIGHTEST ASH BLONDE



9.01 ONLY AF  
VERY LIGHT NATURAL ASH BLONDE



9.1  
VERY LIGHT ASH BLONDE



9.11 ONLY AF  
VERY LIGHT DEEP ASH BLONDE



8.1  
LIGHT ASH BLONDE



6.01  
DARK BLONDE NATURAL ASH



AF AMMONIA FREE OPTION AVAILABLE

ONLY AF AMMONIA FREE ONLY



# COPPER

PREMIER NOIR  
PREMIER BLANC



# RED / RED-COPPER

PREMIER NOIR  
PREMIER BLANC

10.42

LIGHTEST COPPER  
IRIDESCENT BLONDE



9.04 <sup>AF</sup>

VERY LIGHT NATURAL  
COPPER BLONDE



9.42 <sup>AF</sup>

VERY LIGHT COPPER  
IRIDESCENT BLONDE



8.42

LIGHT COPPER  
IRIDESCENT BLONDE



6.64

DARK EXTRA  
RED COPPER BLONDE



6.65

DARK EXTRA  
RED MAHOGANY BLONDE



7.43

COPPER  
GOLDEN BLONDE



7.40 <sup>AF</sup>

INTENSE  
COPPER BLONDE



7.44

DEEP COPPER  
BLOND



5.4

LIGHT  
COPPER BROWN



4.62

EXTRA RED  
IRIDESCENT BROWN



<sup>AF</sup> AMMONIA FREE OPTION AVAILABLE

ONLY  
<sup>AF</sup> AMMONIA FREE ONLY



# COLD BROWN

PREMIER NOIR  
PREMIER BLANC



# WARM BROWN

PREMIER NOIR  
PREMIER BLANC

9.23 VERY LIGHT IRIDESCENT GOLDEN BLONDE	8.23 LIGHT IRIDESCENT GOLDEN BLONDE	7.23 <sup>AF</sup> IRIDESCENT GOLDEN BLONDE	7.24 IRIDESCENT COPPER BLONDE		10.32 LIGHTEST GOLDEN IRIDESCENT BLONDE	9.32 VERY LIGHT GOLDEN IRIDESCENT BLONDE	7.35 GOLDEN MAHOGANY BLONDE	7.52 MAHOGANY IRIDESCENT BLONDE						
6.02 DARK NATURAL IRIDESCENT BLONDE	6.23 <sup>ONLY</sup> <sup>AF</sup> DARK IRIDESCENT GOLDEN BLONDE	6.12 DARK ASH IRIDESCENT BLONDE	5.15 <sup>AF</sup> LIGHT ASH MAHOGANY BROWN	5.12 <sup>ONLY</sup> <sup>AF</sup> LIGHT ASH IRIDESCENT BROWN	4.15 <sup>AF</sup> ASH MAHOGANY BROWN	6.32 DARK GOLDEN IRIDESCENT BLONDE	6.35 DARK GOLDEN MAHOGANY BLONDE	6.42 DARK COPPER IRIDESCENT BLONDE	6.52 DARK MAHOGANY IRIDESCENT BLONDE	5.42 LIGHT COPPER IRIDESCENT BROWN	4.45 COPPER MAHOGANY BROWN			

<sup>AF</sup> AMMONIA FREE OPTION AVAILABLE

<sup>ONLY</sup>  
<sup>AF</sup> AMMONIA FREE ONLY



# ULTRA BLONDE

PREMIER NOIR  
PREMIER BLANC



# MIXED COLOURS

PREMIER NOIR  
PREMIER BLANC

00 <sup>AF</sup>

CLEAR



900

NATURAL  
SUPER BLONDE



902

IRIDESCENT  
SUPER BLONDE



901

ASH  
SUPER BLONDE



921

IRIDESCENT ASH  
SUPER BLONDE



YELLOW



COPPER



RED



PINK



VIOLET



BLUE



ASH



GREEN

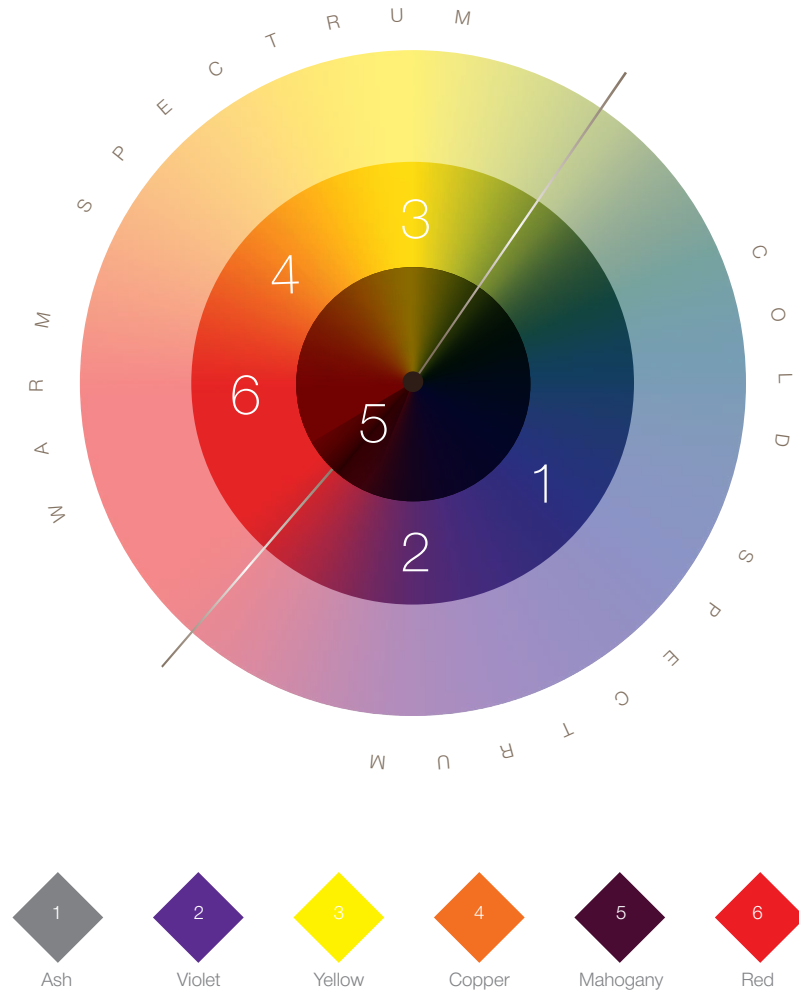


<sup>AF</sup> AMMONIA FREE OPTION AVAILABLE

ONLY  
<sup>AF</sup> AMMONIA FREE ONLY

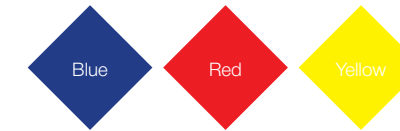


COLOUR SPECTRUM



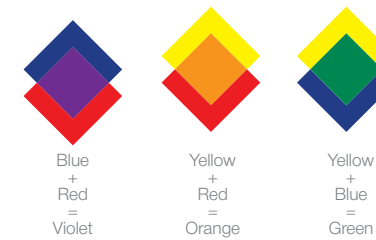
PRIMARY COLOURS

Primary colours may not be obtained by mixing other colours as they are unique



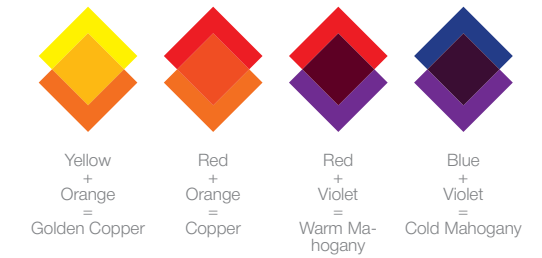
SECONDARY COLOURS

Secondary colours are obtained by mixing primary colours



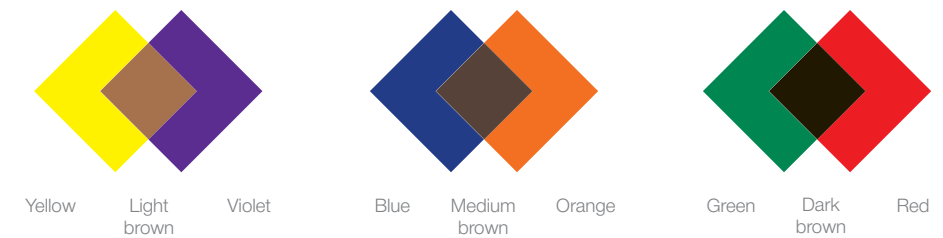
TERTIARY COLOURS

Tertiary colours are obtained by mixing primary and secondary colours



NEUTRALIZATION

The opposite shades of the colour spectrum neutralize each other



# PREMIER NOIR

INNOVATIVE COLOURING CREAM



PREMIER NOIR  
COLOURING CREAM

PREMIER NOIR CREAM  
DEVELOPER

#### GUIDANCE:

- Apply on dry, unwashed hair.
- Mix 1 part colour with 1.5 parts Premier Cream Developer (50 ml of Premier Noir Colouring Cream + 75 ml of Premier Cream Developer).
- For the ultra blond range, mix 1 part colour with 2 parts Premier Cream Developer (50 ml of Premier Noir Colouring Cream + 100 ml of Premier Cream Developer).
- When the exposure time is over, emulsify thoroughly and rinse abundantly with water. Apply shampoo and conditioner.
- For a stronger cosmetic effect, to ensure the colour molecules are attached well to your hair, use Colour Protect hair care products by T-LAB Professional.

#### MIXING:

Darker shade colouring / same shade colouring / one shade root lightening / pastel colouring – Premier Blanc Cream Developer – 3 % 10 Vol.  
1-2 stages lightening / gray hair covering – Premier Noir Cream Developer – 6 % 20 Vol.  
2-3 stages lightening – Premier Noir Cream Developer – 9 % 30 Vol.  
Up to 4 stages lightening – Premier Noir Cream Developer – 12 % 40 Vol.  
Ultra blond colours work with 9 % 30 Vol. and 12 % 40 Vol. Premier Noir Cream Developer only.

#### EXPOSURE:

- Warm shades – 35 min.
- Cold shades – 40 min.
- Ultra blond lightening – 45-50 min.
- Gray hair covering – 45-50 min.

#### VIRGIN HAIR:

Select the Premier Cream Developer.

The application process comprises two stages.

- First stage: apply the Premier Noir Colouring Cream to entire hair length and ends 1.5 cm away from the scalp. Exposure time – 15 min.
- Second stage: apply the Premier Noir Colouring Cream to roots and spread it evenly throughout the lengths and ends. Exposure time – 35-40 min.

When the exposure time is over, add a small amount of warm water to your hair and emulsify the product. Spread the product evenly throughout the lengths and ends, using a comb with non-metal teeth. Rinse abundantly with warm water, apply a shampoo and Colour Protect Masque by T-LAB Professional.

#### REPEATED COLOURING:

Exposure time – 35-40 min. Please follow additional instructions, depending on your hair type and condition.

- If the colour washed out/faded on lengths and ends only slightly, apply the Premier Noir Colouring Cream to grown out roots and leave it on for 30 min. Spread the remaining colour throughout the lengths and leave it on for 5-10 min.
- If the colour washed out/faded on lengths and ends, apply the Premier Noir Colouring Cream to grown out roots and leave it on for 20 min. Spread the remaining colour throughout the lengths and leave it on for 15-20 min.
- If the colour washed out/faded on lengths and ends dramatically, apply the product to grown out roots and immediately spread the colour throughout the lengths, leaving it on for 35-40 min.

When the exposure time is over, add a small amount of warm water to your hair and emulsify the product. Spread the product evenly throughout the lengths and ends, using a comb with non-metal teeth. Rinse abundantly with warm water, apply a shampoo and Colour Protect Masque by T-LAB Professional.

#### GRAY HAIR COVERING:

Recommended Premier Noir Cream Developer – 6 % 20 vol.  
Exposure time – 45-50 min.

Up to 50 % of gray hair - use the desired colour.

More than 50 % of gray hair – mix 1 part the desired colour with 1 part natural base at the same level.

Desired tone level	Alignment tone
9	8.30 (for warm tones) 9.3 (for cold and neutral tones)
8	
7	7.43 (for warm tones) 7.35 (for cold and neutral tones)
6	6.34 (for warm tones) 6.35 (for cold and neutral tones)
5	5.4
4	4.45

#### BLEACHED HAIR TONING:

Recommended Premier Blanc Cream Developer – 3 % 10 vol. or 1 % 3.5 vol.  
Exposure time may be different (5-30 min.) The exposure time should be controlled closely to avoid excessive contrast or colour intensity.

#### Application method:

Apply the Premier Noir Colouring Cream to roots and immediately spread it throughout the lengths and ends.

When the desired colour is achieved, add a small amount of warm water to your hair and emulsify the product. Spread the product evenly throughout the lengths and ends, using a comb with non-metal teeth. Rinse abundantly with warm water, apply a shampoo and Colour Protect Masque by T-LAB Professional.

#### PRE-PIGMENTATION:

If the desired colour is 1-2 shades darker than the initial one, select a shade from the darkening chart at the desired colour level and add it to the selected colour (3-5 g). If the desired colour is 2 and more shades darker than the initial one, use the following method:

- 2-4 shades difference: 10 ml of Premier Noir Colouring Cream (shade selected from the darkening chart) + 30 ml of water (1:3), apply to dry hair;
- 4 and more shades difference: 10 ml of Premier Noir Colouring Cream (shade selected from the darkening chart) + 20 ml of water (1:2), apply to dry hair.

Leave the mixture on and apply the desired colour. When the exposure time is over, rinse abundantly with warm water, apply a shampoo and Colour Protect Masque by T-LAB Professional.

# PREMIER BLANC

INNOVATIVE COLOURING CREAM



#### GUIDANCE:

- Apply on dry, unwashed hair.
- Mix with Premier Cream Developer at a ratio of 1:1.5 (50 ml Premier Blanc Colouring Cream + 75 ml Premier Cream Developer). When working with ultra blond and pastel toning, mix with Premier Cream Developer at a ratio of 1:2 (50 ml Premier Blanc Colouring Cream + 100 ml Premier Cream Developer).
- After the development time is up, rinse out with plenty of water. Apply shampoo and conditioner.
- To enhance the cosmetic effect and strengthen the colour molecules in the hair, use haircare products from Colour Protect collection by T-LAB Professional.

#### MIXING:

#### PERMANENT COLOUR

- Gray hair colouring – 6 % 20 Vol. – use Premier Noir Cream Developer at 1:1 ratio
- 1-2 stages lightening - 6 % 20 Vol. – use Premier Noir Cream Developer at 1:1.5 ratio
- 2-3 stages lightening – 9 % 30 Vol. - use Premier Noir Cream Developer at 1:1.5 ratio, ultra blond range – at 1:2 ratio
- 3-4 stages lightening – 12 % 40 Vol. – use Premier Noir Cream Developer at 1:2 ratio, ultra blond range only.

#### SEMI-PERMANENT COLOUR:

- Same cold shade colouring – use Premier Blanc Cream Developer 1% 3.5 Vol. at 1:1.5 ratio
- Same warm shade colouring – use Premier Blanc Cream Developer 3% 10 Vol. at 1:1.5 ratio

#### PASTEL TONING:

- Cold shade toning – use Premier Blanc Cream Developer 1% 3.5 Vol. at 1:2 ratio
- Warm shade toning – use Premier Blanc Cream Developer 3% 10 Vol. at 1:2 ratio

#### EXPOSURE:

- Warm shades – 35 min.
- Cold shades – 40 min.
- Ultra blond lightening – 45-50 min.
- Gray hair covering – 45-50 min.

#### VIRGIN HAIR:

Select the Premier Cream Developer. The application process comprises two stages.

- First stage: apply the product to entire hair length and ends 1.5 cm away from the scalp.
- Second stage: apply the colour to roots and spread it evenly throughout the lengths and ends. Exposure time – 35-40 min.

When the exposure time is over, add a small amount of warm water to your hair and emulsify the product. Spread the product evenly throughout the lengths and ends, using a comb with non-metal teeth. Rinse abundantly with warm water, apply a shampoo and Colour Protect Masque by T-LAB Professional.

#### REPEATED COLOURING:

- Exposure time – 35-40 min. Please follow additional instructions, depending on your hair type and condition.
- If the colour washed out/faded on lengths and ends only slightly, apply the Premier Blanc Colouring Cream to grown out roots and leave it on for 30 min. Spread the remaining colour throughout the lengths and leave it on for 5-10 min.
  - If the colour washed out/faded on lengths and ends, apply the

Premier Blanc Colouring Cream to grown out roots and leave it on for 20 min. Spread the remaining colour throughout the lengths and leave it on for 15-20 min.

- If the colour washed out/faded on lengths and ends dramatically, apply the Premier Blanc Colouring Cream to grown out roots and immediately spread the colour throughout the lengths, leaving it on for 35-40 min.

When the exposure time is over, add a small amount of warm water to your hair and emulsify the product. Spread the product evenly throughout the lengths and ends, using a comb with non-metal teeth. Rinse abundantly with warm water, apply a shampoo and Colour Protect Masque by T-LAB Professional.

#### GRAY HAIR COVERING:

Recommended Premier Noir Cream Developer – 6% 20 Vol.

Exposure time – 45-50 min.

Up to 50% of gray hair – use the desired colour.

More than 50% of gray hair – mix 1 part the desired colour with 1 part natural base at the same level.

#### BLEACHED HAIR TONING:

Recommended Premier Blanc Cream Developer – 3% 10 Vol. or 1% 3.5 Vol.

Exposure time may be different (5-30 min.) The exposure time should be controlled closely to avoid excessive contrast or colour intensity.

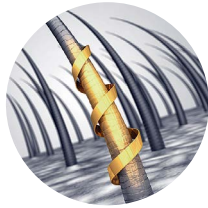
#### Application method:

Apply the product to roots and immediately spread it throughout the lengths and ends.

When the desired colour is achieved add a small amount of warm water to your hair and emulsify the product. Spread the product evenly throughout the lengths and ends, using a comb with non-metal teeth. Rinse abundantly with warm water, apply a shampoo and Colour Protect Masque by T-LAB Professional.

If you need to bleach the hair more than 4 tones or artificial pigment, we kindly recommend you to use Premier Bleaching Products for preliminary colouring.

## UNIQUE NATURAL COMPLEX



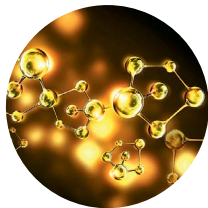
### FRENCH ROSE OIL | EXTRACT

It envelopes the surface of hairs, seals the cuticle while reducing porosity, thus ensuring colour stability. It provides luxurious restoration of the hair and scalp tissue structure.

Owing to the high content of vitamins C, A and B, fatty acids and mineral compounds it thoroughly nourishes and rejuvenates every hair and scalp cell.

### KERATIN

Keratin strengthens and protects hair from fragility. It restores hair and facilitates tight sealing of the cuticle when colouring hair, which guarantees stable hair colour and shine.



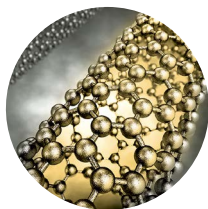
Smart protein restores damaged segments of the cuticular layer, strengthens amino-acid connections inside the hair and prevents damage.

Powerful restoration of keratin chains within the hair stem is a result of the synergy with vitamins B coupled with French Rose Extract, which turns colouring into an innovative treatment procedure ensuring deep hair reconstruction.

### CASHMERE PROTEINS

This protein-based construction material is virtually identical to the structure of human hairs.

It is the most effective restorer of damaged hair sections. It facilitates moisture retention in the hair shaft while preserving its elasticity and strength. It ensures healthy shine and colour stability.



### SILK PROTEINS

They moisturise and cover the scalp and hair with a light protective layer, restore the intracellular cement thus making hair elastic, resilient, shining, voluminous and manageable. Silk proteins have the anti-static effect.

They protect the scalp from drying, repair, ensure gentle care and encourage the activity of hair follicles.



International Group of Companies  
VT HOLDING  
Switzerland, Zug  
[www.vtholding.com](http://www.vtholding.com)

VT Research and Development  
London, Great Britain  
[london@vtholding.com](mailto:london@vtholding.com)

VT Trade America  
Hollywood, Miami Area, USA  
[miami@vtholding.com](mailto:miami@vtholding.com)

VT Trade Europe  
Vilnius Lithuania  
[vilnius@vtholding.com](mailto:vilnius@vtholding.com)

For partnership inquiries:  
[tlab@vtholding.com](mailto:tlab@vtholding.com)

[www.tlabprof.com](http://www.tlabprof.com)